

# CALL FOR SCULPTURE



S.O.S | SOCIETY OF SCULPTORS  
PITTSBURGH, PA

## SOS in Somerset

**Celebrating 90 years of Art Making  
by the Society of Sculptors**

Pittsburgh, Pennsylvania  
Founded in 1935

### October 6 – November 6, 2025

This exhibition is open to all individuals working in any sculptural medium.

**Each artist may submit up to three pieces.**

*See Submission Guidelines below.*

#### **Presented in Partnership:**

Laurel Arts: <https://laurelarts.org>

Society of Sculptors, Pittsburgh: <https://www.societyofsculptors.org>

#### **Location:**

The Philip Dressler Center for the Arts and Gap Museum  
214 S. Harrison Ave.  
Somerset, PA 15501  
814.443.2433

*Minutes from the I-76 Somerset interchange.*

Gallery Hours: Monday through Thursday, 11am – 6pm  
Saturday 10am – 2pm

---

#### **Awards:**

Three awards will be given in the amount of \$200.

*Generously underwritten by the Tomayko Foundation.*

---

#### **About the Exhibition:**

- This exhibition celebrates the work that SOS has been doing for 90 years! From 1935 to the present, members have been making sculpture that reflects their inner thoughts, passions, and the issues that command attention within the culture of the moment. Submit to this exhibition to share your skill, vision, and amazing artwork to a new audience in Somerset, Pa.
- All types of sculpture are acceptable: pedestal pieces, floor and wall artwork, plus the possibility of small installations. There is also some ability to suspended artwork.
- Outdoor work can be accommodated if installed in a stable manner.
- *Laurel Arts reserves the right to remove artwork that is considered unstable or otherwise hazardous to the viewing public.*

#### **Submission & Selection:**

Each artist may submit up to three pieces. All sculptures will be juried from images of completed artwork by Mark Miller, Education and Exhibits Director, Pittsburgh Botanic Garden

### About the Juror:

As gallery coordinator at the Pittsburgh Botanic Gardens - PBG, Mark Miller has a versatile background in the arts. He has managed and curated numerous indoor and outdoor exhibitions at this prominent public garden. Mark is himself an avid gardener as well as an astute curator in constant search of engaging artwork to showcase at the PBG visitor center and grounds.

### SCHEDULE:

- **Submission Due:**  
Sunday, September 14, midnight
- **Notification of Accepted Artwork:**  
Monday, September 22 (via email)  
**Note:** Accepted artists will be asked to contribute \$20 at time of drop-off to help with reception and other exhibition expenses. Cash/check only, payable to SOS.
- **Drop-Off:**  
Saturday, October 4, 10:00 AM – 2:00 PM  
SOS plans to work with accepted artists to help facilitate transportation of artwork.
- **Closing Reception & Pick-Up:** Thursday, November 6, 6:00 PM – 8:00 PM  
At 8:00 artists may begin removing their sculpture from the exhibition.  
*No artwork should be removed before that time.*  
**Note:** Unless arrangements have been made in advance, any artwork remaining at the close of the exhibition will be considered abandoned and handled by SOS or SRU as they choose.

---

### Fee:

**SOS Members – FREE**

Non-Members – \$15 for each sculpture submitted.

- Join SOS! – \$40 entitles you to submit up to 3 works. [Join Now](#) and select “New membership.”  
*Membership connects you to our organization’s member only exhibitions and events.*

---

### Questions or Delivery/Pick-up Issues:

Can’t deliver or pick-up during the listed times? Coordinate with another member or contact Duncan MacDiarmid for alternative options: [macd@earthviewstudios.com](mailto:macd@earthviewstudios.com)

### Sales:

All sales of artwork and related taxes will be handled by Laurel Arts.

Laurel Arts will take a 30% commission on all works sold. Please price your artwork accordingly.

### Liability and Agreement:

This exhibit will also be displayed virtually on Laurel Arts website, [www.laurelarts.org](http://www.laurelarts.org). The artist understands and agrees that Laurel Arts reserves the right to reproduce and distribute the images through print and/or electronic media for promotion of the exhibition. The artist grants Laurel Arts the right to allow authorized agents to photograph and/or videotape the artwork and to use or reproduce images of the artwork for publicity and educational purposes. The artist confirms there are no existing copyrights on the listed artwork(s) that interfere with these conditions and will retain all copyrights to his/her/their artwork(s). All entries will be handled with care; however, the Philip Dressler Center for the Arts/Laurel Arts and the Society of Sculptors (SOS) are not responsible for any loss or damage. Participating artists agree to hold the Philip Dressler Center for the Arts/Laurel Arts and SOS harmless and to indemnify the Philip Dressler Center for the Arts/Laurel Arts and SOS against any and all claims resulting from losses. Artists are encouraged to procure their own insurance.

## **Pedestals!**

If you have one bring it! Laurel Arts has quite a few, but if we have a few more it will be helpful.

## **Submission Guidelines:**

Each artist may submit up to three (3) artworks.

**Create a one-page PDF file for each artwork you wish to submit.**

**See PDF Document Example below.**

All PDF documents will be assembled into one document with no names visible to the juror.

## **To Submit:**

- 1) Submit your PDF files using this form: [Submission Form](#)
- 2) If not a SOS member, make your payment through the SOS Website: [Pay Now](#)  
Use the "Non-Member Exhibition Fee" tab according to the number

**Questions?** Contact Duncan MacDiarmid at: [macd@earthviewstudios.com](mailto:macd@earthviewstudios.com)

---

## **PDF Document Example**

**Please name the PDF files as follows:**

Your Name-1\_Title of Artwork.pdf

Your Name-2\_Title of Artwork.pdf

Your Name-3\_Title of Artwork.pdf

See next page for sample submission.

## Sample: Henry Moore-1\_King and Queen.pdf



King and Queen  
Bronze  
16" x 13" x 9"  
\$1,200

Envisioned as a married couple of high social stature, this sculpture tries to bring these individuals "down to earth." They sit on a simple bench as if they could be any two people, sharing a life together.



Paste image(s) of your sculpture within this document.

Use as many images as needed to convey the spirit of the sculpture.

### At bottom of page list:

Title

Material

Dimensions

Sale price or NFS (Not for Sale)  
70% of price is received by the artist.

You may add a *brief* statement your sculpture. Please not more than 1-3 sentences.

**Do not include your name on this page!**

## Gallery Specifications and Pedestal Information:

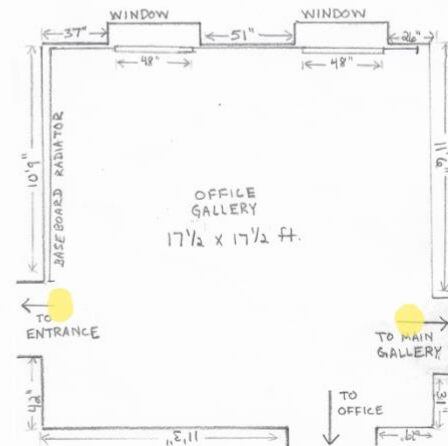
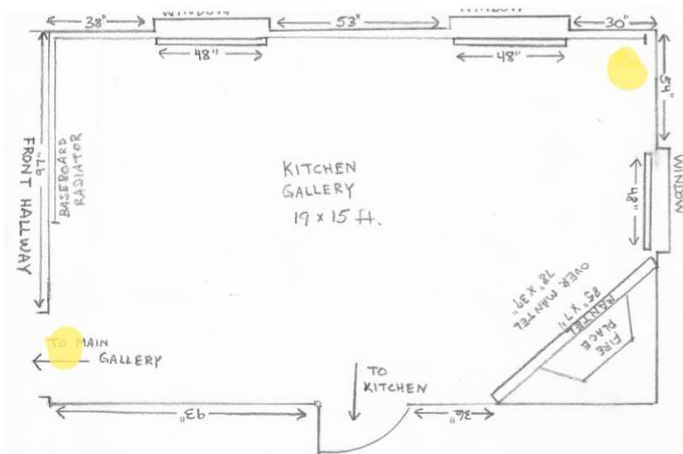
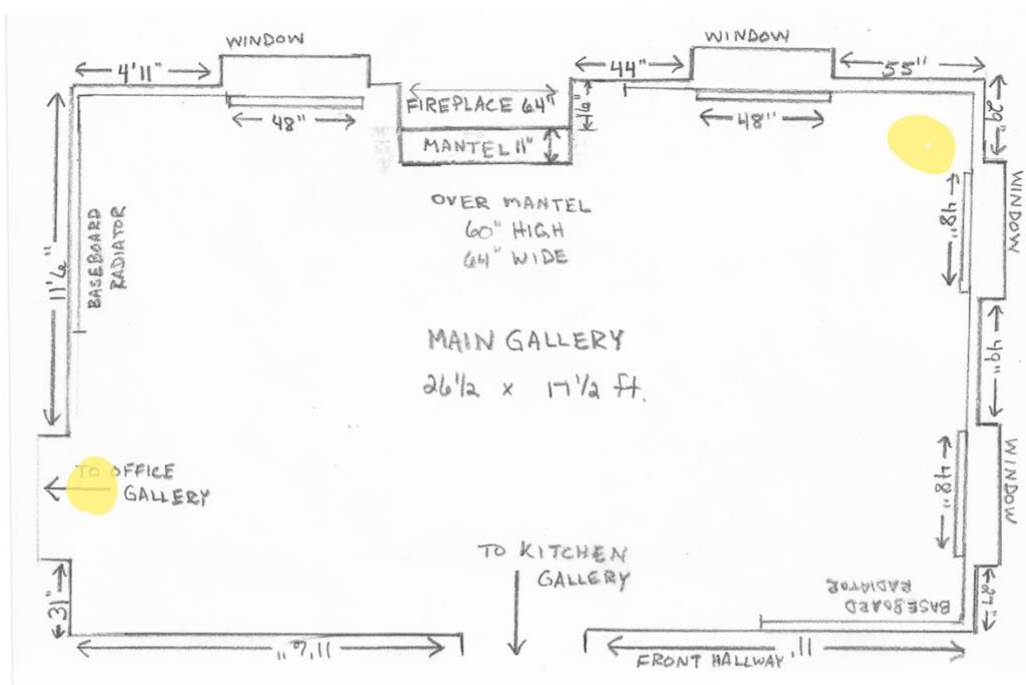
### FLOOR PLAN & GALLERY DIMENSIONS

Please see the provided floor plan for reference.

- There are three gallery spaces on the ground level of the center.
- Ceilings are 10 feet tall.
- There are hooks in the ceiling slaced around the perimeter that can support 30 pounds and one center hook that can support 70 pounds.
- The door opening for gallery access is 6'-8" H x 32" W. There are a few steps depending on which entry one uses.

### PEDESTALS

Laurel Arts has many pedestals of varying size. Following artwork selection, exhibitors may be contacted if an appropriate pedestal is not available for their work. In such a situation, the artist will need to provide one.







Main Gallery



Kitchen Gallery

Note: The table will not be present!





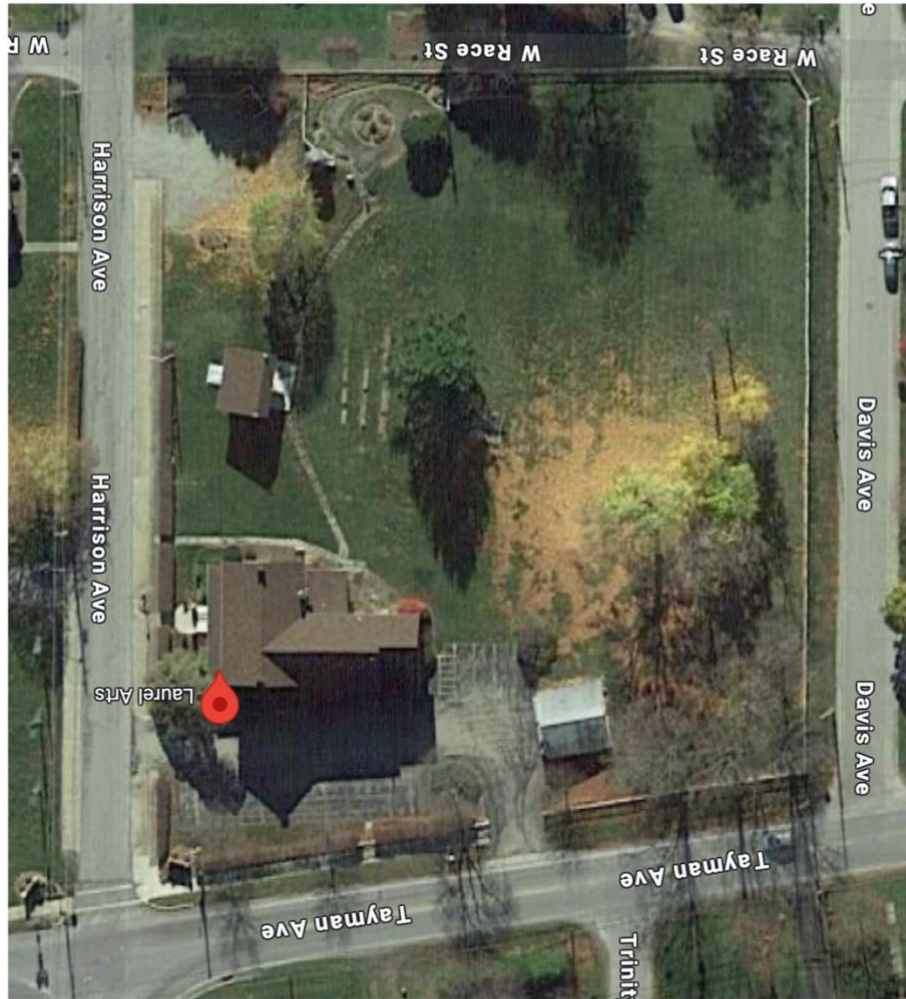
Office Gallery

Outdoor Front Area





# Outdoor Yard Area



View from Parking Lot